



£1,300 PCM *Not specified*

AVAILABLE NOW

A bright, airy and beautifully presented two bedroom, first floor apartment located in a quiet cul-de-sac that is centrally located within walking distance of High Wycombe's town centre and railway station which offers a direct line service into London Marylebone, making it perfect for those looking to commute. The accommodation comprises; entrance hallway, large lounge/dining room, separate modern fitted kitchen, two bedrooms and family bathroom. The property further benefits from; UPVC double glazing, electric heating, allocated parking for one car, communal gardens and is available now. An internal viewing is highly recommended.

HOLDING FEE: £300.00
DEPOSIT REQUIRED: £1,500.00

- TWO BEDROOM APARTMENT
- CLOSE TO TRAIN STATION
- ELECTRIC HEATING
- MODERN BATHROOM
- INTERNAL VIEWING ADVISED
- GOOD CONDITION THROUGHOUT
- AVAILABLE NOW
- UPVC DOUBL GLAZING
- IDEAL FOR COMMUTERS
- WELL PRESENTED THROUGHOUT

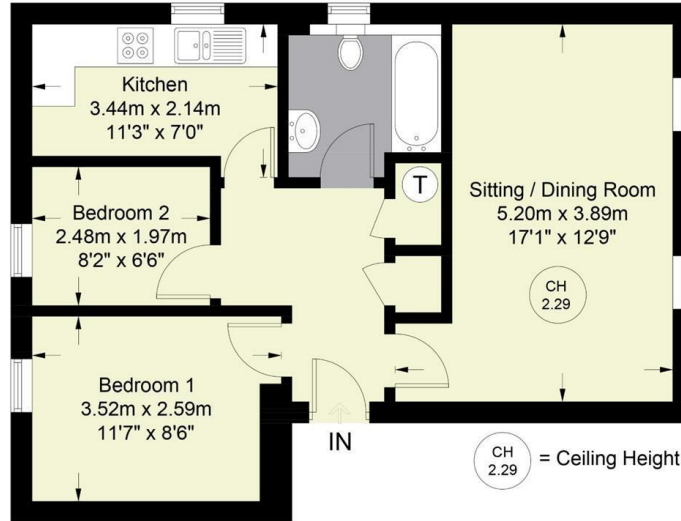


28a Lower Furney Close, High Wycombe, Bucks, HP13 6XQ

Estate Agents ~ Lettings Agents ~ Valuers ~ Independent Mortgage Advisors

Lower Furney Close

Approximate Gross Internal Area
563 sq ft / 52.3 sq m



GROUND FLOOR

Floor Plan produced for Hurst by Media Arcade ©.
Illustration for identification purposes only. Window and door openings are approximate. Whilst every attempt is made to assure accuracy in the preparation of this plan, please check all dimensions, shapes and compass bearings before making any decisions reliant upon them.

